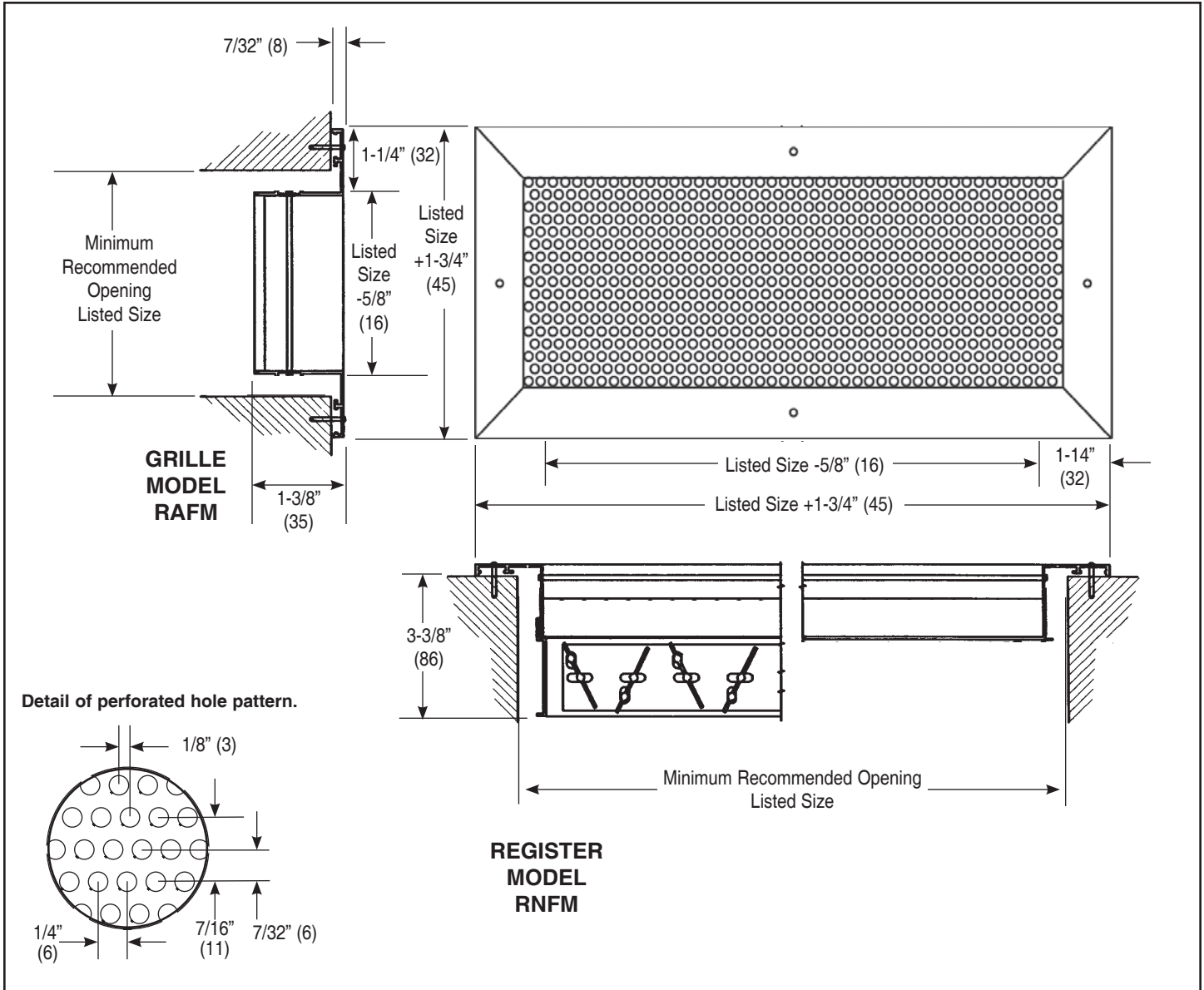


**Imperial [IP] Dimensions**  
**Metric (SI) in Parentheses**

CARNES COMPANY, 448 S. Main St., P. O. Box 930040, Verona, WI 53593-0040 Phone (608) 845-6411 Fax: (608) 845-6504 carnes@carnes.com



**NOTES:**

- Standard screws are #6 x 1-1/4" (32) phillips countersunk screws.
- Standard color is Carnes Bright White. Other colors are available on request.
- Perforated material is approximately 51% free area.
- Standard sizing is in even inch increments in both dimensions. Odd inch and fractional sizing [in 1/8" (3) increments] is available on request.
- Steel damper is model RXEA opposed blade damper. Aluminum damper is model RXFM opposed blade damper.
- The standard operator on the damper takes a medium size flat-blade screwdriver.
- Metric dimensions are given in millimeters.

**DIMENSIONS LISTED IN INCHES (In Millimeters)**

Model	Damper	Front Direction	Available Sizes*	
			Minimum W x H	Maximum W x H
RAFM	None	Horizontal	6x4 (152x102)	48x36 (1219x914)
RAFM	None	Vertical	6x4 (152x102)	48x36 (1219x914)
RNFM	Aluminum	Horizontal	6x4 (152x102)	48x36 (1219x914)
RNFM	Aluminum	Vertical	6x4 (152x102)	48x36 (1219x914)

**\* Minimum and maximum single units sizes.**

Larger sizes will be furnished by butting single units together. All butted units will be constructed of even inch sized panels unless otherwise specified. Maximum damper will be 36" x 24". Larger units will have multiple dampers.