

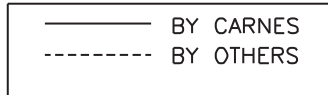
SPECIFICATION SHEET

SINGLE DUCT AIR TERMINAL - WITH HOT WATER REHEAT

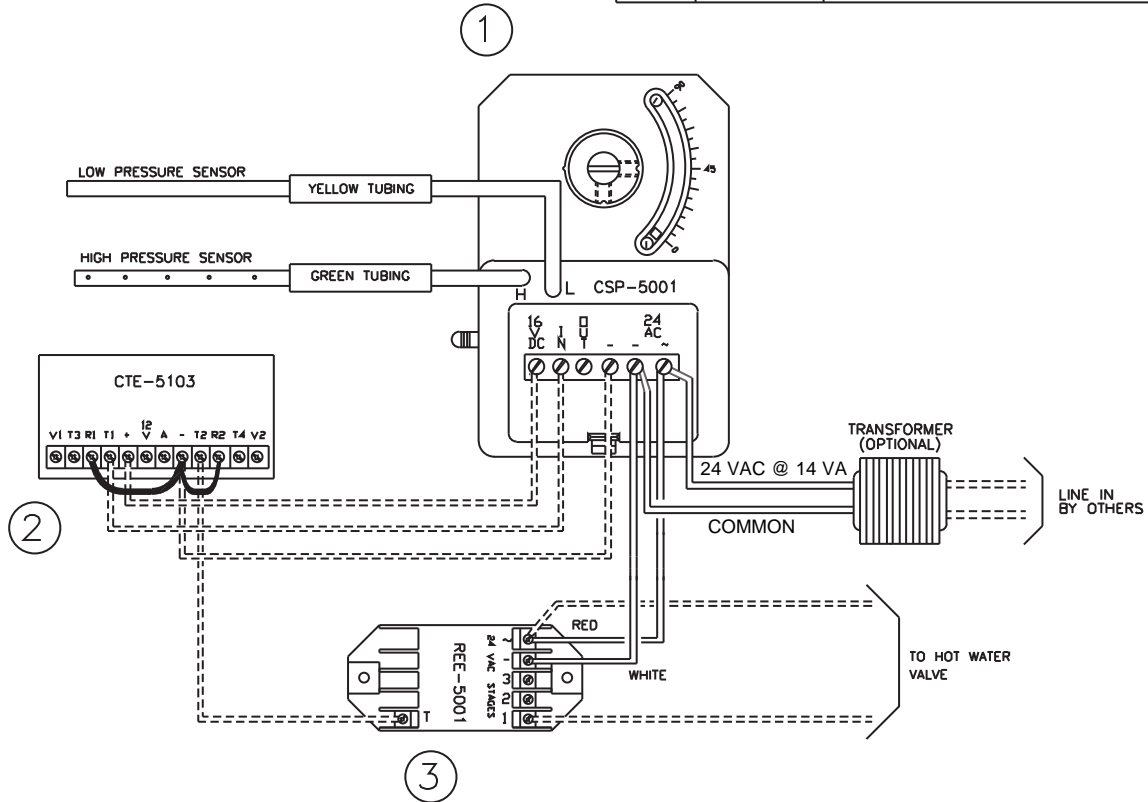
ANALOG ELECTRONIC CONTROLS

ET - CONTROL OPTION

CARNES COMPANY 448 S. Main St., P. O. Box 930040, Verona, WI 53593-0040 Phone: (608)845-6411 Fax: (608)845-6504 www.carnes.com



ITEM	PART NO.	DESCRIPTION
1	999-2661	CSP-5001 CONTROLLER/ACTUATOR
2	AXWCB	CTE-5103 THERMOSTAT
3	999-2671	REE-5001 RELAY MODULE



SEQUENCE OF OPERATION

ON A CALL FOR COOLING, AIRFLOW WILL INCREASE AS THE DAMPER OPENS TOWARDS THE MAXIMUM CFM SETTING TO SATISFY ROOM SET-POINT.

ON A CALL FOR HEATING, AIRFLOW WILL DECREASE AS THE DAMPER CLOSES TOWARDS THE MINIMUM CFM SETTING TO SATISFY ROOM SET-POINT.

WITH A FURTHER CALL FOR HEAT, AIRFLOW IS AT MINIMUM CFM AND HOT WATER HEAT (HW) IS ENERGIZED AT THE HEATING SET-POINT.

HOT WATER HEAT (HW) IS DEENERGIZED AS ROOM TEMPERATURE INCREASES. AIRFLOW WILL INCREASE TO SATISFY ROOM SET-POINT.

CONTROL DIAGRAM

